

SēL

Tucson, Arizona, U.S.A.



1630 SOUTH RESEARCH LOOP #180/170
TUCSON, AZ, 85710 UNITED STATES OF AMERICA



"The SēL Your
Wallet Has Been
Dreaming Of."

Hyperlite GP

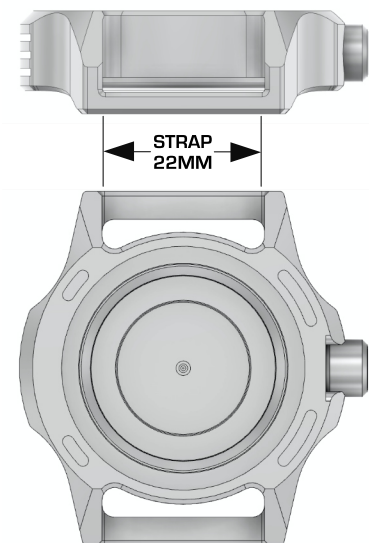


LIMITED OFFER: \$1,199 RESERVE FOR ONLY \$25.00

www.selinstrument.com

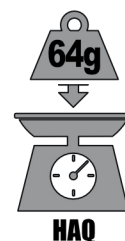
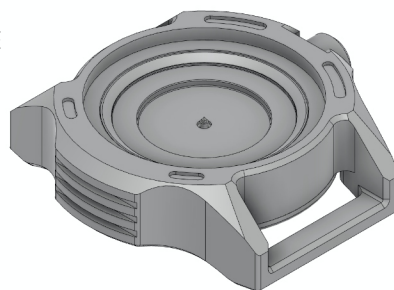
The ultimate grab-and-go MILSPEC field watch. Everything you need, nothing you don't. We applied absolutely everything we know about engineering and manufacturing the world's highest performing grade 5 titanium tool watches to create the best modern general purpose (GP) field watch available today. And, we made damn sure that our warfighters, first responders, meat eating savages, and enthusiasts alike wouldn't have to break the bank to get one. Engineered, machined, assembled, and tested like every SēL in our Tucson, Arizona workshop.

- >>> Grade 5 Titanium
- >>> Sapphire Crystal (4mm)
- >>> Left or Right Hand Triple Sealed Crown. Choose either 3 or 9
- >>> 300M+ WR
- >>> Shock Resistant Silicone Core. Enhanced Movement Protection
- >>> Solid 22mm Lugs for All Pass-Through Straps
- >>> Swiss Chronometer Grade Thermo-Compensated Quartz
- >>> Blasted Ti or Matte Black DLC Finish
- >>> Seconds Hand Colors: White, Orange, Fluorescent Lime Yellow



SHOWN APPROXIMATELY TO SCALE

CASE WIDTH
43MM



WRIST HEIGHT
10.9MM



LUG TO LUG
47.9MM

WEB: www.selinstrument.com

INSTAGRAM: @selinstrument

EMAIL: support@selinstrument.com